

p16 ARC Antibody
Rabbit mAb
Catalog # AP90356**Specification**

p16 ARC Antibody - Product Information

| | |
|-------------------|------------------------|
| Application | WB, IHC, FC, ICC, IP |
| Primary Accession | O15511 |
| Reactivity | Rat |
| Clonality | Monoclonal |

Other Names

p16 Arc; ARPC5; ARC16; Arp2/3 protein complex subunit p16;

| | |
|---------------|------------|
| Isotype | Rabbit IgG |
| Host | Rabbit |
| Calculated MW | 16320 Da |

p16 ARC Antibody - Additional Information

| | |
|------------------------------|---|
| Dilution | WB~~1:1000 IHC~~1:100~500 FC~~1:10~50 ICC~~N/A IP~~N/A |
| Purification | Affinity-chromatography |
| Immunogen | A synthesized peptide derived from human p16 ARC |
| Description | Functions as component of the Arp2/3 complex which is involved in regulation of actin polymerization and together with an activating nucleation-promoting factor (NPF) mediates the formation of branched actin networks. |
| Storage Condition and Buffer | Rabbit IgG in phosphate buffered saline , pH 7.4, 150mM NaCl, 0.02% sodium azide and 50% glycerol. Store at +4°C short term. Store at -20°C long term. Avoid freeze / thaw cycle. |

p16 ARC Antibody - Protein Information**Name** ARPC5**Synonyms** ARC16**Function**

Component of the Arp2/3 complex, a multiprotein complex that mediates actin polymerization upon stimulation by nucleation-promoting factor (NPF) (PubMed:9230079). The Arp2/3

complex mediates the formation of branched actin networks in the cytoplasm, providing the force for cell motility (PubMed:9230079). In addition to its role in the cytoplasmic cytoskeleton, the Arp2/3 complex also promotes actin polymerization in the nucleus, thereby regulating gene transcription and repair of damaged DNA (PubMed:29925947). The Arp2/3 complex promotes homologous recombination (HR) repair in response to DNA damage by promoting nuclear actin polymerization, leading to drive motility of double-strand breaks (DSBs) (PubMed:29925947).

Cellular Location

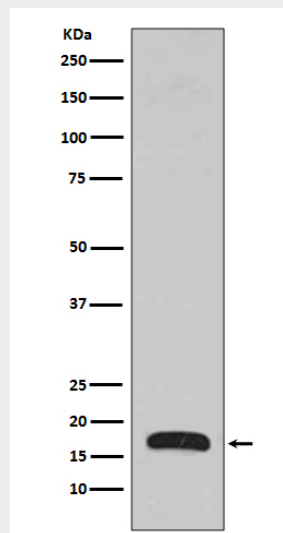
Cytoplasm, cytoskeleton. Cell projection. Nucleus

p16 ARC Antibody - Protocols

Provided below are standard protocols that you may find useful for product applications.

- [Western Blot](#)
- [Blocking Peptides](#)
- [Dot Blot](#)
- [Immunohistochemistry](#)
- [Immunofluorescence](#)
- [Immunoprecipitation](#)
- [Flow Cytometry](#)
- [Cell Culture](#)

p16 ARC Antibody - Images



Western blot analysis of p16 Arc expression in Human fetal brain lysate.